

6) Is there any relationship between this motion and any future possibilities with acquiring additional property, such as to the rear of the present buildings?

The current Long Range Planning Committee Phase One proposal does not rule out future additional properties. The plans by necessity, however, make no design assumptions about additional property. The Long Range Planning Committee and its proposals can only plan for those properties over which the church currently has ownership.

7) Should the motions be approved, what church members comprise the Building Committee and how were they nominated and elected?

With the exception of the Recording Secretary (non-voting volunteer) and the Architect (hired by the congregation), the Building Committee must be nominated and elected at a Church/Charge Conference of the Church per the United Methodist Book of Discipline.

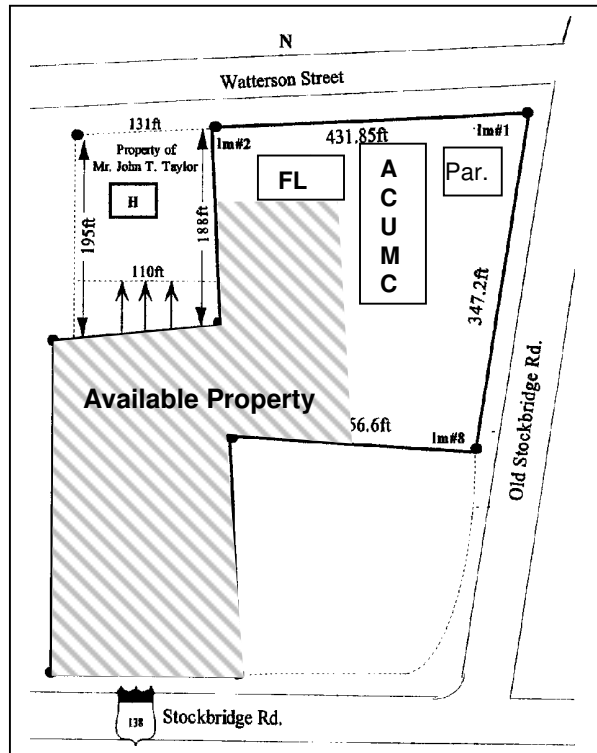
8) What is a Church Conference, and who can participate?

A Church Conference is the full members of a local congregation meeting in business session to decide on a previously announced motion. Called and chaired by the District Superintendent, the Church Conference is limited to acting on its stated agenda item – in this case, the motions from the Long Range Planning Committee. Discussion, motion, and voting privileges at a Church Conference are reserved for full members of Andrews Chapel United Methodist

Church who are in attendance. Full membership includes youth who have been confirmed into Christian discipleship and church membership.

9) If I am unable to attend, can I “send” my vote with someone else.

No – the United Methodist Book of Discipline defines a quorum as those who are present, and proxy voting is not allowed.

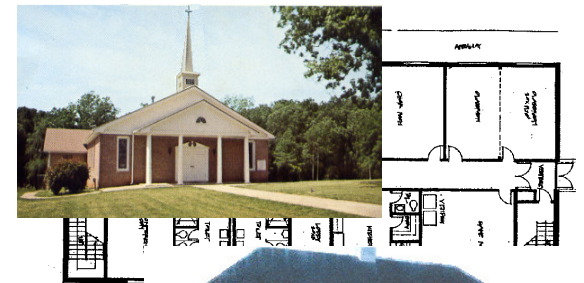


- Prepared by
Long Range Planning Committee
 Connie Ward, Chair
- | | | |
|--------------------|-----------------|-----------------|
| -Rev. Wimbley Hale | -Sabrina Barber | -Curtis Green |
| -Ed Clemons | -Isiah Moore | -Adelle Freeman |
| -Fred Smith | -Kurdice Neal | -Lester Jackson |
| -Don Alexander | -Douglas Miller | -Reddie Butler |

Fax (770) 471-7034
 Email: acumc2@bellsouth.net

**Andrews Chapel
 United Methodist Church**

**Multipurpose Building
 Church Conference**



**Questions
 and
 Answers!**

**Wednesday, February 1, 2006
 7:00 p.m.**

Questions regarding Church Conference

The Griffin District Superintendent, Rev W. Clay Jacobs, has called a Church Conference for Andrews Chapel United Methodist Church on Wednesday, February 1, 2006 at 7 p.m. in the sanctuary. The purpose of the Church Conference is to act on resolutions brought to the congregation by the Long Range Planning committee. The following questions are offered as information and assistance in understanding action items to be considered.

1) What is the motion on which the church will vote February 1?

BE IT RESOLVED, that the Long Range Planning Committee makes the following motion:

1. That Congregation affirm a capital building project for a multipurpose building.
2. That the Church Conference elects a Building Committee consisting of nine (9) members.
3. That the Building Committee be authorized to:
Interview and hire an architect.
Determine size and configuration of needed facilities.
With architect, develop preliminary plans

with cost estimates for construction.
Determine phases for construction / remodeling that will permit our ongoing ministry to continue.
Interview and hire a Capital Funds Consultant.
Develop a plan for campaign theme and strategy.

AND BE IT FURTHER RESOLVED that the Building Committee continue to work with the architects and pre-construction consultants to develop detailed plans and specifications, secure detailed cost estimates, develop a plan for phasing the construction and a plan for financing the project, which will be presented to a Church Conference for final approval according to ¶2543.7 of *The Book of Discipline 2004*.

2) What does the motion approve?

The motions approve the scope of work for Phase I, based on the report of the Long Range Planning Committee recommendations.

3) What does the motion not approve?

Actual construction
Actual cost of construction
Interior or exterior finishes
Construction contractor and subcontractors
Exact placement of doors, windows, stairwells
Furnishings and equipment
Precise square foot measurements and dimensions

4) Do these motions approve specific details within the plan, such as exact room configurations and size, locations of doors,

finishes and interior styles, etc? What is still open to change after approval of this motion?

Not only do these motions not approve the specific details – these motions are actually the first required step in making determination of the details. The first part of creating construction documents – known as “The Design Development Phase” – centers on developing these particular details. Once these motions are approved, the Long Range Planning Committee will give further responsibility to the newly-formed Building Committee that will represent the congregation in the Design Development Phase.

5) Does this motion mean we are approving construction? What additional reviews, actions, and approvals will be required of the congregation prior to actual construction?

No – this motion only means that we are approving the selection of an architect and preliminary documentation that allows the congregation to better determine the true costs and issues related to later construction. Actual bids on both construction and on financing are not possible without construction documents.